



# COMBINED WEATHER SENSOR "WENTO-IND"

Wind parameters · air temperature · relative humidity · barometric pressure · dew point / 6 parameters and optional precipitation!

## Unique all-rounder...

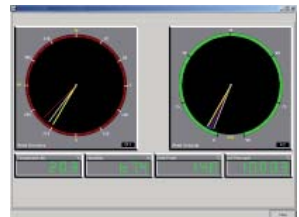
the new generation of a professional, particularly compact weather station for universal application! Measurement of 6 meteorological parameters and the precipitation quantity (optional), and that at an optimum price-performance ratio. The wind sensors and the integrated weather module have a very robust design. High-quality special alloys make this weather station environmentally resistant and extremely stress resistant. Reliable measurement of meteorological parameters is ensured even under extreme weather conditions.

- ▶ extremely robust and compact
- ▶ reliable year-round operation in all climate zones
- ▶ simple and rapid mounting
- ▶ serial interface for direct connection to PC technology

- industrial applications
- building services
- environmental measurements under extreme environmental conditions



**Software SSDL**  
The software for direct connection to PC and visualization of the instantaneous and average values as well as data storage in Excel!



Professional Line (14516) Combined Weather Sensor WENTO-IND Id-No. 00.14516.210 001

Parameters:	Measuring range:	Accuracy:	Resolution:
<b>Wind direction:</b>	0...360°	± 1°	< 1°
<b>Wind speed:</b>	0.3...75 m/s	± 2 % FS at 0.3...50 m/s	< 0.1 m/s
<b>Relative humidity:</b>	0...100 % r. h.	± 3% (10...90%) • ± 4% (0...100%)	0.5 % r. h.
<b>Barometric pressure:</b>	600...1100 hPa	± 2 hPa (-30...+70 °C)	0.1 hPa
<b>Air temperature:</b>	-30...+70 °C	± 0.8 °C (influence of the shelter see manual)	0.1 °C
<b>Precipitation:</b>	see precipitation sensors (*precipitation protocol activating WIXDR: Id. 97.14516.000 000)		
Range of application:	temperature -30...+70 °C heated • wind speed 0...80 m/s • 0...100 % r. h.		
Protocols:	NMEA 0183 • WIMWV • WIMHU • WIMMB • WIMTA • WIXDR *		
Interface:	serial RS 422/ Talker Baud rate 4800 • 1 Hz (at measuring cycle 10 Hz) • 8 N 1		
Supply voltage:	sensor 11...28 V <sub>DC</sub> / 50 mA at 24 V <sub>DC</sub> , max. 120 mA • heater electr. controlled 24 V <sub>DC</sub> / 2x9 W		
Housing:	saltwater-proof aluminium especially-anodized, protective paint (RAL 9006) • IP 65 in upright position		
Dimensions/ Weight:	H 440 mm • B max. 475 mm • mast mounting: Ø 51 mm pipe • 2.3 kg		
Accessories:	Indicator e. g. (14742) METEO-LCD • Data logger e. g. SYNMET • Meteo LAN Communicator (95666) • Traverses/ masts/ software/ power supply units s. "Periphery" (1642 U66) Cable 10 m • with 12-pole bayonet plug • ready-made		

32.16420.066 100